

ATLAS

MADE IN GERMANY. SINCE 1919.

235RR



RAIL-ROAD EXCAVATOR	DIN EN 15746 1-3
----------------------------	-------------------------

OPERATING WEIGHT	22-23.5 TONS
-------------------------	---------------------

ENGINE POWER	115 KW
---------------------	---------------

ATLAS. FOR HIGHER EFFICIENCY.

Experience the result of more than 100 years of expertise: robust perfection, high-grade details, and well-engineered functionality. As a competent and highly efficient manufacturer of premium construction machinery in Germany, ATLAS develops loader cranes, excavators and material handlers – **as customized, individual special solutions as well.** ATLAS is the construction machine for toughest applications and for all who are looking for uncompromising quality.

**ATLAS POWER OF INNOVATION.
MADE IN GERMANY.**

"For more than a century, our highly motivated employees devote themselves every day with unfailing dedication to the design and assembly of tailor-made excavators and cranes that serve to significantly speed up your working processes and make them more efficient. Our dedication is reflected in working tenaciously every day in order to create innovative solutions. This tradition, which extends over generations, is proof of our continuous commitment to developing high-quality machines that meet the ever-changing requirements and challenges of our time."

Brahim Stitou, CEO



235RR



SUCCESSFULLY ON TRACK SINCE 1965.

**CUSTOMIZED SOLUTIONS FOR ANY RAIL NETWORK.
ECO-FRIENDLY, VERSATILE, AND ABSOLUTELY FUNCTIONAL.
ATLAS CONSTRUCTION MACHINERY MADE IN GERMANY
– FOR 60 YEARS SECOND TO NONE ON ANY TRACK SYSTEM.**

//Whatever we tackle, it will be impressive!

In 1965, we started the era of rail-road excavators: The world's first ATLAS rail-road excavator laid the foundation for a leading position in this market. Our secret to success lies in the combination of efficiency, technological supremacy, and in-depth discussions with customers. This makes our construction machinery so versatile and strong! From standard model all the way to custom-made

design – we have the best solution for any challenge. State-of-the-art ideas and innovative concepts are the cornerstones for construction machines that meet the highest standards in a wide range of applications.

Once again, the result is impressive: Our powerful, sturdy and stable ATLAS 235RR. A rail-road excavator like no other.

OPERATING WEIGHT	22 - 23.5 TONS
ENGINE POWER	115 KW

THAT'S WHAT AN ATLAS IS ALL ABOUT.

HIGH MACHINE UPTIME

High-quality and **robust components** for reliable performance – plus a **telemetric system** that provides relevant data for a smooth completion of projects.

ROAD APPROVAL? CERTAINLY!

Highest standards allow for **acceptance in accordance with DIN EN 15746-1-3** as well as **road approval, including §29**.

ATLAS WORKING EQUIPMENT

In-house manufacturing allows for great flexibility and a choice of individual solutions exactly to customer request – plus: **quick-change device** originating from our own production.

OPTIMAL TRACK UNDERCARRIAGE

Complete freedom to easily **switch between rail and road**.

POWERFUL HYDRAULICS

In a short space of time full capacity for demanding tasks - **precision for sensitive working movements**, even under load.

CAB WITH SAFETY PLUS

A large cab door and non-slip steps - **safety precautions in accordance with ROPS** - plus: footwell lighting for optimal light when entering and leaving the cab.

SUPERIOR CAB COMFORT

Dual cab with easy handling and health protection. **360° panoramic view** for higher safety - plus **air conditioning, ergonomically adjustable seat** and, upon request, pressure ventilated.

REMARKABLY STABLE IN VALUE

Perfectly aligned components in the powerful engine - for **long service life and low fuel consumption** at top performance.

SMART SERVICE

Accessible service points save downtime, maintenance costs, simplify retrofitting - plus **optional telemetric system** for relevant machine data

EXCELLENT STABILITY

4 individually **controllable outrigger stabilizers** for even load distribution and outstanding stability - in demanding environments **along the tracks**.

**ECM I-IV
CERTIFIED**

COMPACT. VERSATILE. AND QUIET.



COMPACT EXTERNAL DIMENSIONS ENSURE HIGH MANEUVERABILITY.

The 235RR is versatile! Our rail-road excavator was specifically designed to operate efficiently in the most confined spaces. Due to its compact built, it offers the flexibility to maneuver through tight passages without effort. Even in urban environments or in areas that are difficult to access, it operates without any problems.

This makes it the best of its class for our customers!



LOW NOISE LEVEL - BOTH INSIDE AND OUTSIDE

The special soundproofing for greater quiet inside the cab provides for better concentration and health protection. Our bearings and engines emit only a minimum of sound and the noise level, both inside and outside of the cab, is very low.



1.75/1.95 meters

A LEADING EDGE IN EVERY DETAIL.

WE WON'T DENY IT: WE ARE PROUD OF THE ATLAS 235RR. IT IS THE TAILOR-MADE RESPONSE TO THE CUSTOMERS' NEEDS OF TODAY AND TOMORROW. THIS POWERFUL PACKAGE IS THE RESULT OF MANY YEARS OF PASSIONATE DEVELOPMENT WORK.

Our commitment to top performance and power of innovation is reflected in every detail of the ATLAS 235RR. From its impressive performance all the way to its exceptional reliability, this rail-road excavator is designed to meet the needs of the modern track construction industry.

We are proud to offer a rail-road excavator that not only fulfills the expectations of our customers but exceeds them. With the ATLAS 235RR, we are setting a new industry-wide standard for efficiency, versatility and quality and, again, take the lead for "tailor-made solutions off the shelf".



RE-RAILING WITHIN SECONDS

// Fast & flexible

We understand the importance of efficiency at the construction site. The ATLAS 235RR saves precious minutes as it can be re-railed and de-railed in record time. Time is money.



// Railroad car brake system

With our railroad car brake system, you move heavy loads safely and efficiently. More specifically: You can pull braked railroad cars with a total weight of up to 120 tons without effort.



// 4 controllable outrigger stabilizers

With four individually controllable outriggers, our rail-road excavator ensures an even distribution of load and superior stability, even in difficult environments along the tracks.

SMART: SERVICE POINTS WITHIN EASY REACH



// Easy Servicing

When designing the ATLAS rail-road excavator, we already took maintenance into account.

Easily accessible service points save long downtime or high maintenance costs. Retrofitting at a later time is uncomplicated and inexpensive. Plus: The optionally available **telemetric system** provides all relevant data of the machine.

SAFE: CAMERAS AND LIGHTING



// Rear-view and side camera

A new level of safety and control thanks to the standard rear-view camera and integrated side camera on the right in the direction of travel.



// LED Reversing light

Enhanced safety due to the LED reversing light and the option of a 270-degree camera - for a comprehensive view around the vehicle.



// Road Headlights

Front headlights with integrated daytime driving lights, high-beam and dipped beam, and turn indicators. A variety of LED work lights is available as an option.



// Access and Exit Lighting

Safety during access and exit due to state-of-the-art LED entry lighting for hassle-free operation even in dark environments.

// LEDs in Service Area

Our LED lighting solution uses a bright and energy-saving technology to provide a clear view and the appropriate light to perform service work easier and more efficient.



FEEL. GOOD. CAB.

WELCOME TO ONE OF THE WORLD'S MOST COMFORTABLE WORKPLACES, WELCOME TO OUR CAB. WITH A 360-DEGREE PANORAMIC VIEW, EASY TO READ APPLIANCES, LOW NOISE LEVEL, AND WELL-CONCEIVED VENTILATION AND ERGONOMICS CONCEPT.

Get on board, feel good, and get started! The driver's cab on the ATLAS 235RR, the maneuverable powerhouse, could make others jealous of one of the nicest workstations in the world.

Special emphasis is placed on clear arrangement, driver's health as well as comfortable usability. Via non-slip steps and a wide access, you enter the spacious cab. Here, the machine operator watches over the projects from a premium driver's seat!

The seat is ergonomically designed, made from premium materials, and available in various designs – individually adjustable of course, while the pneumatic suspension and lumbar support ensure a high level of seat comfort. Seat heating and headrest are a must as well!

From the seat, everything a driver needs for the job is within easy reach. Ranging from the adjustable control panel and the ergonomically formed joystick, all control levers and panels are within reach.

The automatic climate control not only provides for cooling on hot workdays but also ensures supply of clean, dust-free air, and in wintertime it keeps warm. Via the display, temperature, fan and air-conditioning can easily be controlled.

All control instruments in this state-of-the-art and well-equipped cab are clearly arranged.

One also cannot too strongly emphasize the large-scale glazing for superior panoramic view. For a safe and good feeling. Throughout the full, sometimes long workday!



**YOUR WORKSTATION
OF TOMORROW.
ALREADY TODAY.**



// Steering Wheel with multifunctional panel

Important functions ready to hand and, at the same time, safely control the machine. Comfort and precision thanks to steering wheel with intuitive multifunctional panel.



// Efficient Air Conditioning

Fresh air keeps the head fresh and the respiratory passages clear from dust! This is created by the well-thought-out ventilation system.



// Monitor with side and rear-view camera

The monitor ensures maximum safety thanks to a better view – in particular during rotary movements and operation in confined spaces.



// Non-slip flooring

Always a firm grip underfoot even when speed is of the essence: The non-slip flooring prevents the driver from slipping.



// USB Port, 12V and 24V Plug

One 12V and one 24V plug as well as two USB ports can be used to charge and operate a wide range of devices.



// Railroad car Brake System

with driver's brake valve. The permissible maximum trailer load is 120 tons (braked) and 40 tons (unbraked).



// Multifunctional Joystick

Due to CAN-Bus, operating functions can be freely configured and adapted to your individual work requirements.



// Bottle holder

With the bottle holder within comfortable reach, the thirst quencher is always close at hand and yet stowed well and safely!



// Second Seat Standard

Teamwork as a standard feature: Now it is easier and safer to take someone on board with you. The new additional seat improves comfort for the workmate.



// Telemetry System

Our telemetry system allows for the real-time collection and transmission of data from remote or hard-to-reach locations. This system is standardly installed in our ATLAS 235RR.



A FIRM STAND AND SAFETY ON RAILS



// Stability

Optimum stability and safety on rails are the outstanding product features - thanks to the low center of gravity and transverse mounted engine.

And good to know: The outriggers lift automatically when the "drive" function is selected. This avoids damage during rail operation. In addition, de-railing of the bogie by the outriggers is automatically prevented.

Contrary to the friction wheel version, the contact pressure is continuously monitored. And the air reservoirs of the railroad car brake are located in the upper and undercarriage. They are well protected in order to ensure a reliable brake function. Safety first!



EFFICIENCY AND SELF-DIAGNOSTICS ON RAILS



// ATLAS CARSY (computer-assisted rail contact pressure system)

Our system automatically sets the required pressures, permanently monitors and, if required, corrects them - for the precise adjustment of contact pressure.

Depending on the preselected operating mode and boom position, the track wheel cylinders are supplied with different pressures, locked or hydraulically fed.

The front and rear track wheels can be separately controlled to allow for smooth re-railing and solid by-passing of switching devices in the track.

Plus: ATLAS CARSY automatically carries out a self-diagnosis of the electronic system. And even in the event of functional errors or total breakdown, de-railing is safeguarded. Dependable!



INTELLIGENT LIMITATIONS



// Electronic height limitation - Load moment limitation

When reaching the endpoint, the computer-assisted swivel limitation proportionally reduces the speed of the upper carriage. Simultaneously, the electronic height limitation eliminates the risk of the excavator arm getting in contact with any obstacles above like, for example, power lines. The maximum stick height, based on the calculation point, is always taken into account.

And there is more: The system registers whether a grab or bucket is mounted and adapts the programmed working height accordingly. The moving stops when the programmed endpoint is reached.

By the way: The drivers can program the swivel and height limitations with ease from their seat without having to exit the machine.

ELECTION VICTORY



// The right undercarriage for any application.

Driving Power

Whether crawling or at top speed - the great tractive force makes the excavator cross over any terrain quickly and safely - assisted by the reliable traction properties of our tires. The sensitive power-assisted steering on the pendulum axle turns even the roughest terrain into a "straight road".

The 235RR also features a traction increase: If required, the contact pressure of the drive wheels on the rail is boosted by approx. 20% at the touch of a button, optimizing propulsion for an improved start under load. The chassis also features robust, specially designed excavator axles with planetary gear units on all 4 wheel hubs. Four-wheel drive, variable speed drive motor and a double-acting travel brake valve are already standard.

Reliability - Here we play it safe

- Tie-down lugs for fast and safe securing of the excavator for transport on rail or road.
- Steering axle with automatic pendulum axle locking for driving with heavy loads on any terrain. Locking is activated either automatically when braking or manually.

Additional safety aspects

- Brakes: wet, maintenance-free multi-disk brake
- Excellent emergency steering properties

ENGINE



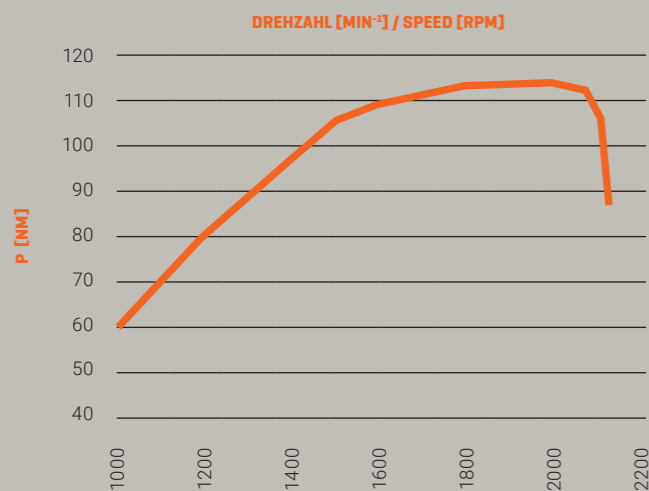
Deutz // TCD 4.1 L4 – intelligent and efficient

Since ATLAS was established, we are convinced of the quality of Deutz engines. This is why the water-cooled 4-cylinder inline engine with turbocharging and with charge air-cooling and exhaust after-treatment (EAT) is the key component of the 235RR, too.

The powerful Deutz Common-Rail (DCR®) high-pressure injection system and electronic engine control (EMR 5) with smart connection to the drive management ensure highest engine performance at lowest consumption.

// Compliance with emission standards:

EU-stage 5 and US EPA Tier 4 with DOC / DPF / SCR TIER IV final and the EU-stage 5.160



HYDRAULIC SYSTEM



Linde

The hydraulic system ensures quick response times by providing maximum utilization of the available engine performance and yet, the Linde hydraulic load-sensing system provides movements independent of the load via an electronically controlled pump and load-independent flow distribution (LUDV). This intelligent performance control ensures high flow distribution, combined with proportional work functions.

For enhanced efficiency, the work speed can always be adjusted to the operating conditions – by freely selectable and adjustable work modes. For maximum operating performance, a power boost is available as well.

AXLES



Neukirchener Achsenfabrik

The combination of frame, axles and transmission provides a perfect output of power at enhanced stability – due to the proven selection of quality products and the ideal positioning of the components. The robust frame structure ensures higher uptime and a long service life of the machine.

The heavy-duty axle design is excellently suited for driving across difficult terrain. The pendulum axle can be controlled automatically or connected manually.

ATTACHMENT TOOLS



ATLAS

ATLAS offers a wide range of attachment tools for the most diverse requirements – and this from **in-house production!**

This provides you with plenty of benefits:

Very wear-resistant – thanks to the use of high-tensile steels and a solid construction.

Maximum efficiency – all attachment tools are specifically designed for your excavator model and will fit perfectly.

Certified – according to the applicable safety standards

Guaranteed – with full warranty coverage and support

Added value – enhanced resale value

And apart from that: The use of high-quality attachment tools can help to reduce fuel consumption and emissions, which in turn sustainably preserves our environment.

SLEWING RING



Thyssen Krupp – Rothe Erde

Thanks to internal gearing and sealed ball bearings, the ball bearing slewing ring from Rothe Erde is an ideal and, at the same time, cost-effective solution.

The design is resistant to major torque fluctuations at all times.



Scan QR code to go directly to **attachment tools**

TECHNICAL DATA

ENGINE

Power rating according to ISO 9249	115 kW (156 PS)
RPM	1800/min
Model	Deutz TCD 4.1 EU Stage V
Type	Turbocharger/intercooling
Displacement	4038 cm ³
Number of cylinders	4
Cooling system	water-cooled
Air filter	Dry air filter
Battery	2 x 12 V / 100 Ah
Generator	24 V / 100 Ah
Standard Basic equipment	automatic idling system/engine stop cold-starting aid Diesel pre-filter Engine monitoring

HYDRAULIC SYSTEM

AWE 5 System (Load Sensing)
Load-limit controlled high-performance pump
Fuel-saving on-demand power control
Sensitive, proportional, independent control
Primary and secondary protection against overload
Suction valves for all work functions
Break protection for lift and adjustment cylinders
Proportional grab and grab rotating function
Three additional circuits for auxiliary consumers possible
max. 340 l/min flowrate
max. 350 bar operating pressure
Cylinder end position damping
Load-limit control

SLEWING GEAR

Axial piston motor with priority valve	
Planetary transmission	
Automatically controlled multi-disc parking brake	
Two-stage valves	
Slewing torque	59 kNm
Upper carriage rotation speed	9/min

TRAVEL DRIVE + BRAKES

Variable speed drive motor	
Powershift transmission	
Double-acting brake valve	
Travel direction pre-selection via switch on joystick	
Road and rail operation	
Max. speed	Road 20 km/h Rail 19 km/h
Crawling gear shift	max. 1,3 km/h
Off-road gear stepless	max. 5,6 km/h
Drive gear stepless	max. 20 km/h
Rail guide	Track width 1435 mm Additional widths on request
Dual-circuit brake system	multi-disc
Locking brake	multi-disc

UNDERCARRIAGE

Steering axle with automatic pendulum axle locking
Additional axle locking via left joystick
Toolbox at undercarriage
Tires: 10.00-20

DRIVER'S CAB

Meets the latest safety standard (ROPS)	
Extra-wide access	
Ample legroom	
Radio kit with mute function	
Installation kit for thermoelectric cooler	
Various storage options, document compartment	
Thermal insulating glazing, windows tinted	
Excellent panoramic view	
Driver's seat	Comfort seat with headrest Arm rests and lumbar support Seat adjustable independent of console Air suspended Heated Horizontal and vertical suspension Lumbar support
Control	Ergonomic joysticks with proportional slide Slim steering column with adjustable height and tilt Switches neatly arranged on the control panel Pendulum axle locking on the left joystick
Monitoring	Operating data indication via display Automatic monitoring, warning, and storage Rear area monitoring camera Side-view camera, right-hand side
Air-conditioning	Automatic climate control Excellent air distribution due to optimally arranged nozzles Refrigerant R134a
Sound level	ISO 6396 (LpA) inside driver's cab: 69 dB(A) 2000/14 EG (LwA) ambience level: 98 dB(A)

TIRES (OPTIONAL)

4-fold set of tires 10.00-20

FILLING QUANTITIES

Fuel tank	206 liters
Cooling system	38 liters
Engine oil	14 liters
Hydraulic tank capacity	240 liters
Hydraulic system capacity	270 liters
Ad Blue®	32 liters

BOOM

ADJUSTABLE BOOM
Base arm 1.92 m (C68.41P) / Boom 3.3 (C68.46)

WEIGHT

Operating weight	22 - 23.5 tons
------------------	----------------



ACCESSORY EQUIPMENT

IT'S WORTH IT: OUR ATLAS ACCESSORY EQUIPMENT FOR EXTRA COST-EFFECTIVENESS AND SAFETY.

WORKMATE'S COMFORT

270° camera system

LED working lights

Buzzer alert for drive mode

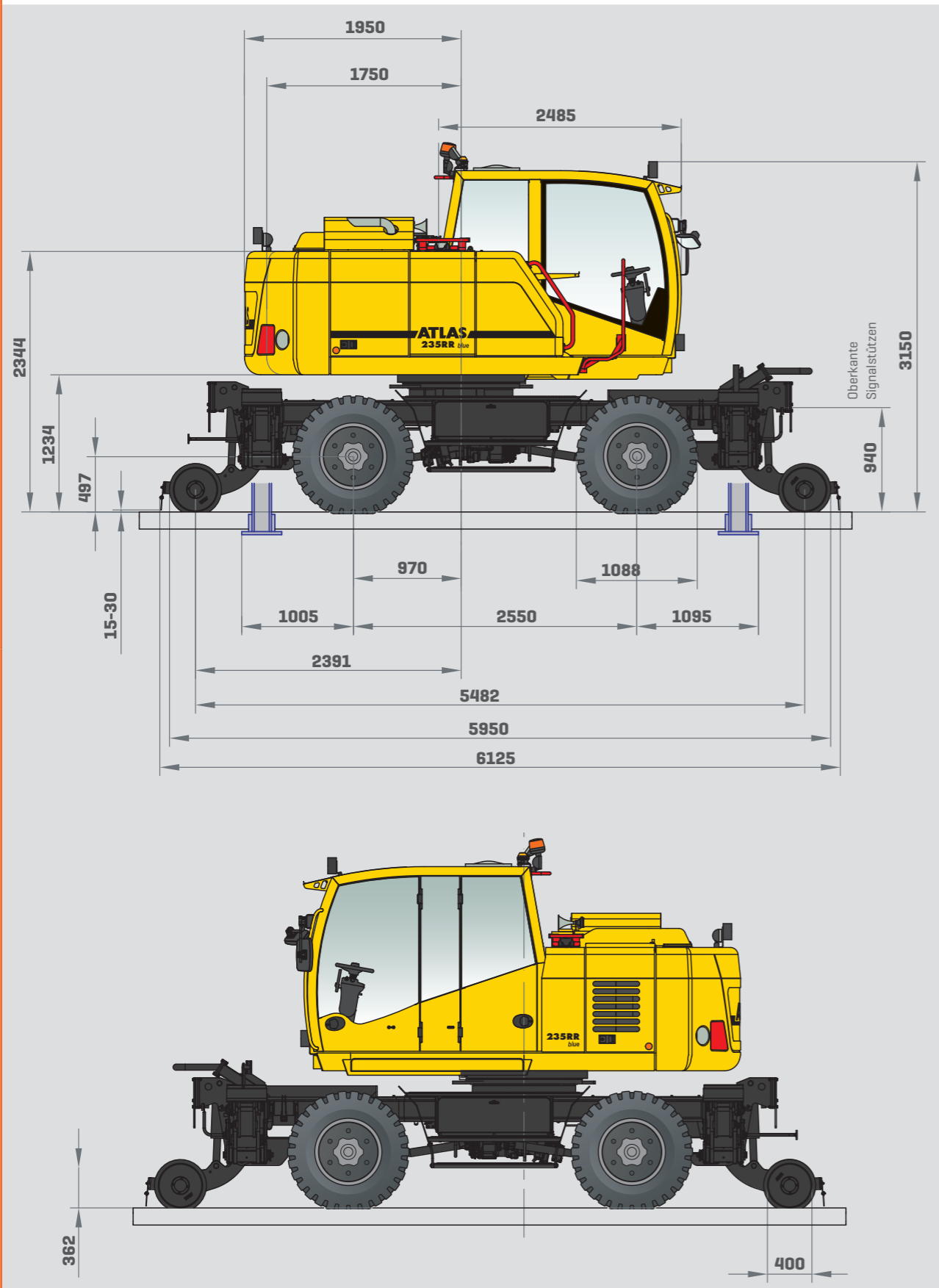
Auxiliary heating with water circuit

GPS/GSM telemetric box for monitoring of operating data, consumption, position

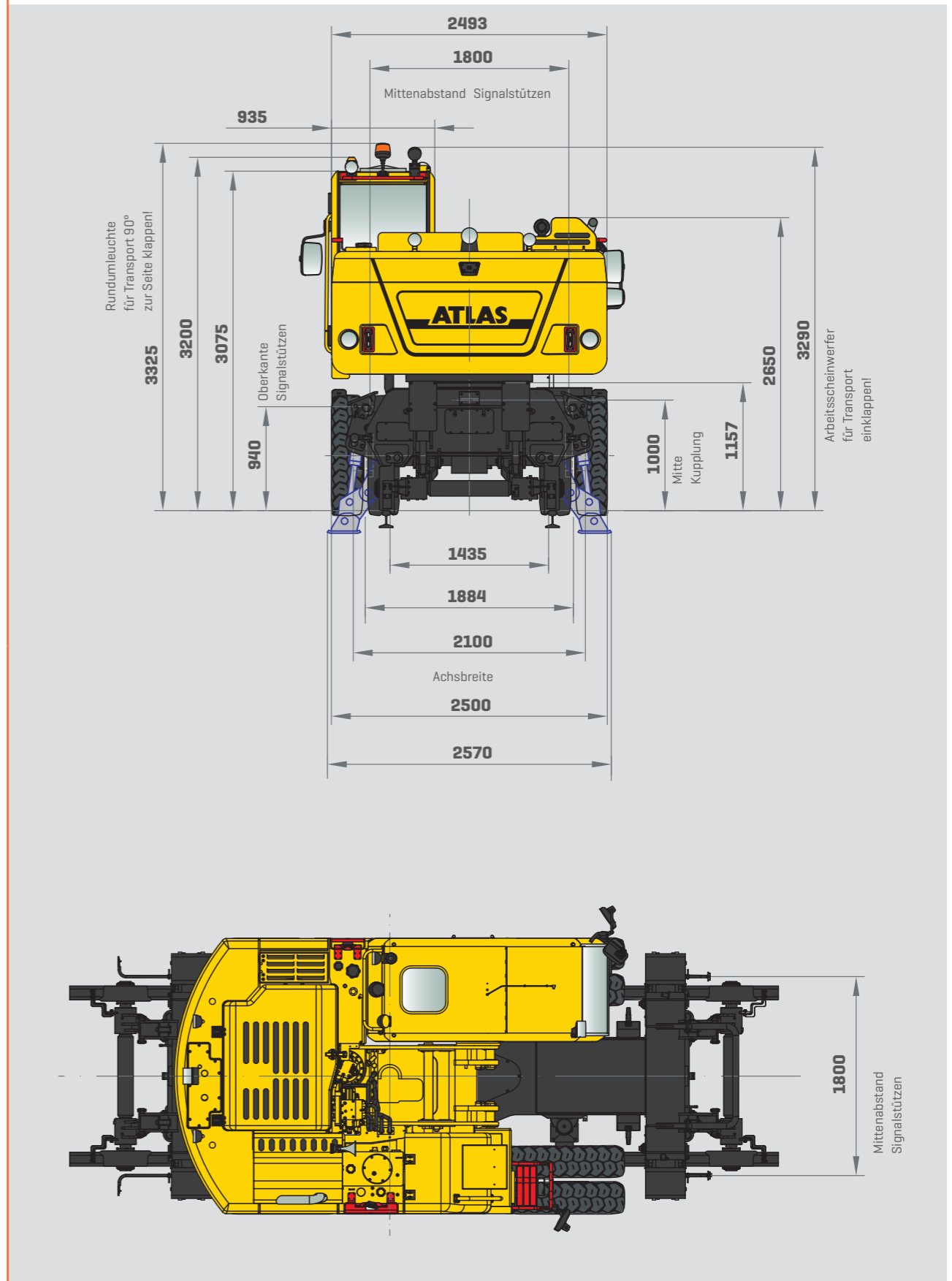
FOR ADDITIONAL ACCESSORY EQUIPMENT, SEE PRICE LIST

SPECIAL SOLUTIONS ON REQUEST

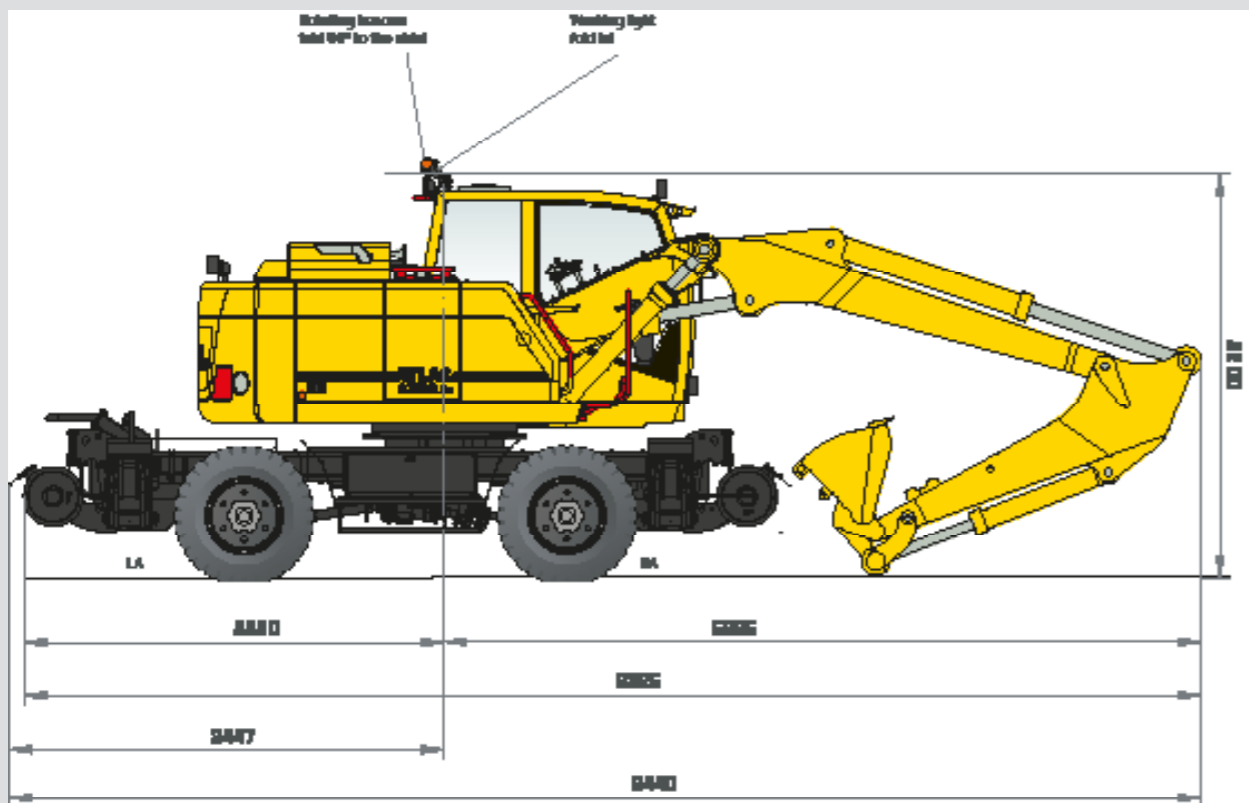
MAIN DIMENSIONS | BASE MACHINE A41.51 WITH OUTRIGGERS, TRACK 1435 MM



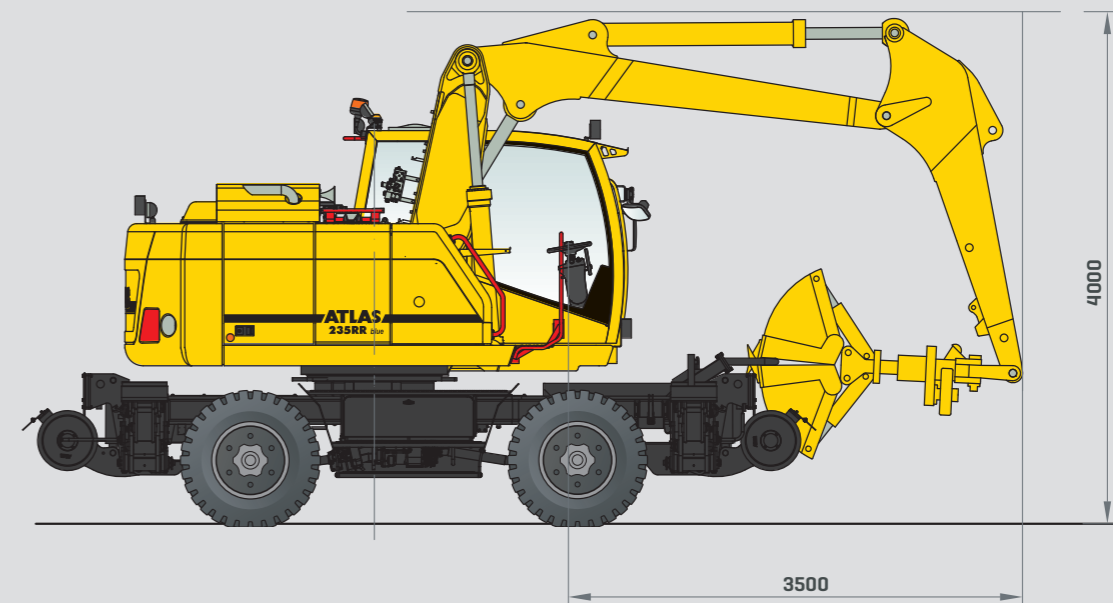
MAIN DIMENSIONS | BASE MACHINE A41.51 WITH OUTRIGGERS, TRACK 1435 MM



TRANSPORT POSITION 235RR



TRAVEL POSITION 235RR



LOAD CAPACITY WITH ADJUSTABLE BOOM 3.3M. STICK 1.95M | SWIVEL RADIUS 1.75M

Height Hook	Mobile on	Alignment	3.0 m	4.0 m	4.5 m	5.0 m	5.5 m	6.0 m	6.5 m	7.0 m
6 m	Road	longitudinal				6.147 H	6.087 H	4.494 H		
		lateral				4.521 K	3.941 K	3.325 K		
	Rail	lateral				2.825 K	2.454 K	2.024 K		
		longitudinal				6.147 H	6.087 H	4.494 H		
4.5 m	Road	longitudinal			7.009 H	6.568 H	6.177 H	5.983 H	5.802 H	
		lateral			5.241 K	4.491 K	3.936 K	3.458 K	2.952 K	
	Rail	lateral			3.219 K	2.787 K	2.450 K	2.148 K	1.790 K	
		longitudinal			7.009 H	6.568 H	6.177 H	5.983 H	5.802 H	
3 m	Road	longitudinal	10.749 H	9.198 H	8.187 H	7.430 H	6.814 H	6.325 H	6.021 H	5.521 K
		lateral	9.319 K	6.035 K	5.089 K	4.424 K	3.888 K	3.433 K	2.952 K	2.558 K
	Rail	lateral	5.253 K	3.619 K	3.099 K	2.722 K	2.410 K	2.127 K	1.791 K	1.515 K
		longitudinal	10.749 H	9.198 H	8.187 H	7.430 H	6.814 H	6.325 H	6.021 H	5.722 H
1.5 m	Road	longitudinal	13.708 H	10.544 H	9.236 H	8.185 H	7.386 H	6.770 H	6.247 H	5.465 K
		lateral	9.086 K	5.900 K	4.998 K	4.408 K	3.910 K	3.365 K	2.893 K	2.517 K
	Rail	lateral	5.120 K	3.520 K	3.032 K	2.704 K	2.425 K	2.063 K	1.735 K	1.479 K
		longitudinal	13.708 H	10.544 H	9.236 H	8.185 H	7.386 H	6.770 H	6.247 H	5.828 H
0 m	Road	longitudinal	15.046 H	10.847 H	9.424 H	8.401 H	7.559 H	6.907 H	6.111 K	5.414 K
		lateral	8.939 K	5.835 K	4.982 K	4.245 K	3.680 K	3.190 K	2.779 K	2.463 K
	Rail	lateral	5.008 K	3.445 K	2.994 K	2.572 K	2.216 K	1.899 K	1.632 K	1.424 K
		longitudinal	15.046 H	10.847 H	9.424 H	8.401 H	7.559 H	6.907 H	6.380 H	5.653 H
-1.5 m	Road	longitudinal	15.388 H	11.012 H	9.653 H	8.678 H	7.740 H	6.756 H	5.374 H	
		lateral	8.709 K	5.618 K	4.780 K	4.090 K	3.496 K	3.055 K	2.693 K	
	Rail	lateral	4.721 K	3.254 K	2.810 K	2.410 K	2.045 K	1.777 K	1.549 K	
		longitudinal	15.388 H	11.012 H	9.653 H	8.678 H	7.740 H	6.756 H	5.374 H	
-3 m	Road	longitudinal	15.259 H	10.171 H	8.324 H	6.583 H				
		lateral	8.796 K	5.461 K	4.559 K	3.930 K				
	Rail	lateral	4.820 K	3.115 K	2.620 K	2.265 K				
		longitudinal	15.259 H	10.171 H	8.324 H	6.583 H				

LOAD CAPACITY WITH ADJUSTABLE BOOM 3.3M. JIB 1.95M | SWIVEL RADIUS 1.95M

Height Hook	Mobile on	Alignment	3.0 m	3.5 m	4.0 m	4.5 m	5.0 m	5.5 m	6.0 m	6.5 m	7.0 m
6 m	Road	longitudinal					6.147 H	6.087 H	4.494 H		
		lateral					4.622 K	4.031 K	3.406 K		
	Rail	lateral					2.916 K	2.537 K	2.100 K		
		longitudinal					6.147 H	6.087 H	4.494 H		
4.5 m	Road	longitudinal				7.009 H	6.568 H	6.177 H	5.983 H	5.802 H	
		lateral				5.358 K	4.592 K	4.026 K	3.539 K	3.025 K	
	Rail	lateral				3.325 K	2.880 K	2.533 K	2.224 K	1.859 K	
		longitudinal				7.009 H	6.568 H	6.177 H	5.983 H	5.802 H	
3 m	Road	longitudinal	10.749 H	10.632 H	9.198 H	8.187 H	7.430 H	6.814 H	6.325 H	6.021 H	5.599 K
		lateral	9.531 K	7.532 K	6.173 K	5.205 K	4.526 K	3.978 K	3.514 K	3.025 K	2.625 K
	Rail	lateral	5.429 K	4.460 K	3.740 K	3.204 K	2.814 K	2.493 K	2.202 K	1.859 K	1.578 K
		longitudinal	10.749 H	10.632 H	9.198 H	8.187 H	7.430 H	6.814 H	6.325 H	6.021 H	5.722 H
1.5 m	Road	longitudinal	13.708 H	12.040 H	10.544 H	9.236 H	8.185 H	7.386 H	6.770 H	6.247 H	5.544 K
		lateral	9.294 K	7.439 K	6.037 K	5.113 K	4.511 K	4.000 K	3.446 K	2.967 K	2.583 K
	Rail	lateral	5.293 K	4.376 K	3.640 K	3.135 K	2.797 K	2.508 K	2.138 K	1.804 K	1.542 K
		longitudinal	13.708 H	12.040 H	10.544 H	9.236 H	8.185 H	7.386 H	6.770 H	6.247 H	5.828 H
0 m	Road	longitudinal	15.046 H	12.582 H	10.847 H	9.424 H	8.401 H	7.559 H	6.907 H	6.198 K	5.492 K
		lateral	9.147 K	7.390 K	5.973 K	5.099 K	4.346 K	3.770 K	3.271 K	2.852 K	2.530 K
	Rail	lateral	5.181 K	4.327 K	3.566 K	3.099 K	2.664 K	2.299 K	1.975 K	1.701 K	1.487 K
		longitudinal	15.046 H	12.582 H	10.847 H	9.424 H	8.401 H	7.559 H	6.907 H	6.380 H	5.653 H
-1.5 m	Road	longitudinal	15.388 H	12.848 H	11.012 H	9.653 H	8.678 H	7.740 H	6.756 H	5.374 H	
		lateral	8.923 K	7.030 K	5.756 K	4.897 K	4.192 K	3.586 K	3.136 K	2.767 K	
	Rail	lateral	4.898 K	4.017 K	3.376 K	2.916 K	2.504 K	2.128 K	1.852 K	1.617 K	
		longitudinal	15.388 H	12.848 H	11.012 H	9.653 H	8.678 H	7.740 H	6.756 H	5.374 H	
-3 m	Road	longitudinal	15.259 H	12.419 H	10.171 H	8.324 H	6.583 H				
		lateral	9.009 K	6.945 K	5.598 K	4.676 K	4.032 K				
	Rail	lateral	4.996 K	3.959 K	3.236 K	2.725 K	2.359 K				
		longitudinal	15.259 H	12.419 H	10.171 H	8.324 H	6.583 H				

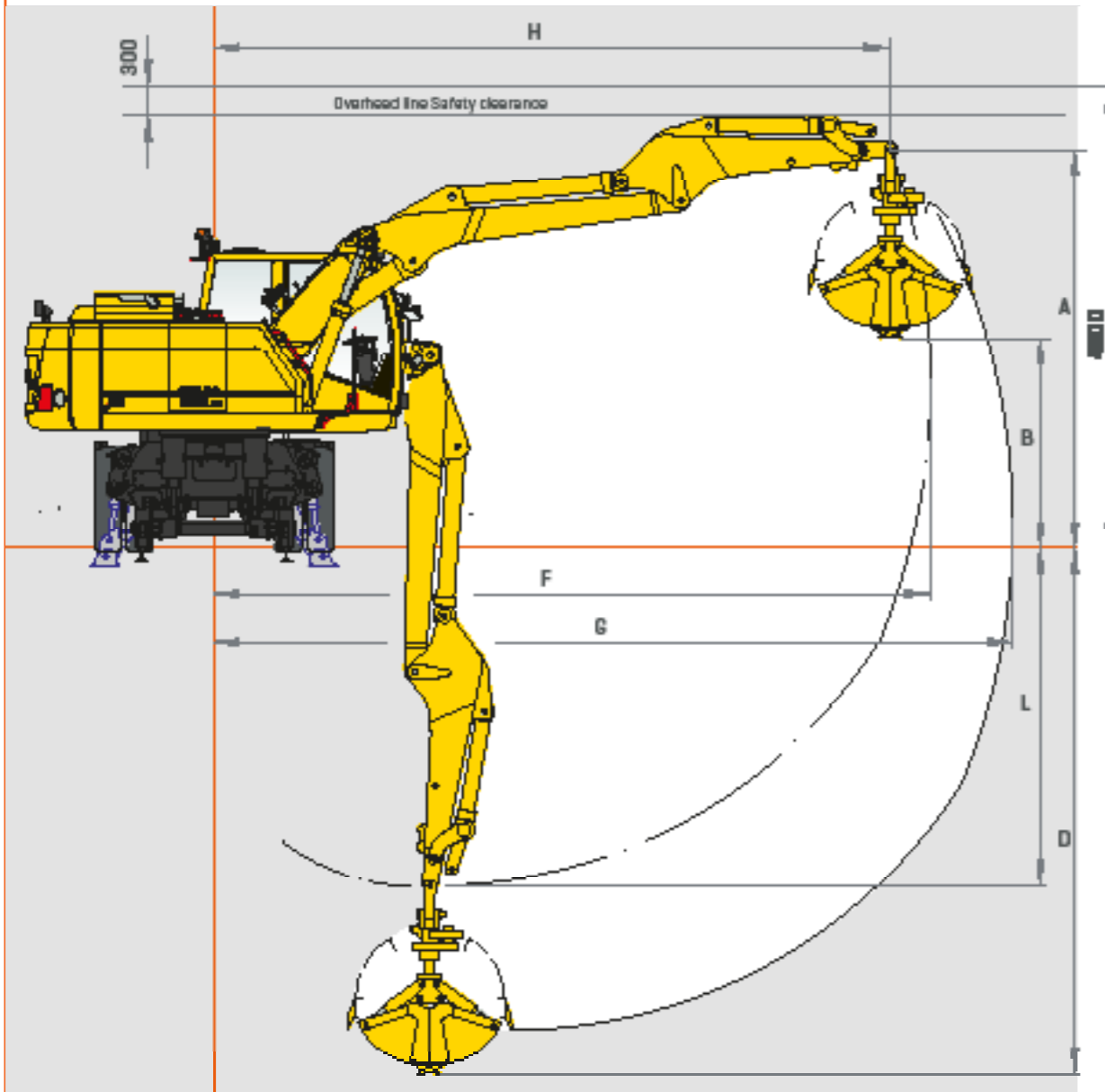
H = hydraulic lifting capacity / K = stability / tip-over limit

The indicated maximum payload values in tons include a stability of 33% or are calculated at 87% of the hydraulic lifting capacity, in accordance with ISO 10567. These values apply at the jib end at optimum position of the respective arm system.

H = hydraulic lifting capacity / K = stability / tip-over limit

The indicated maximum payload values in tons include a stability of 33% or are calculated at 87% of the hydraulic lifting capacity, in accordance with ISO 10567. These values apply at the jib end at optimum position of the respective arm system.

GRAB EQUIPMENT 235RR

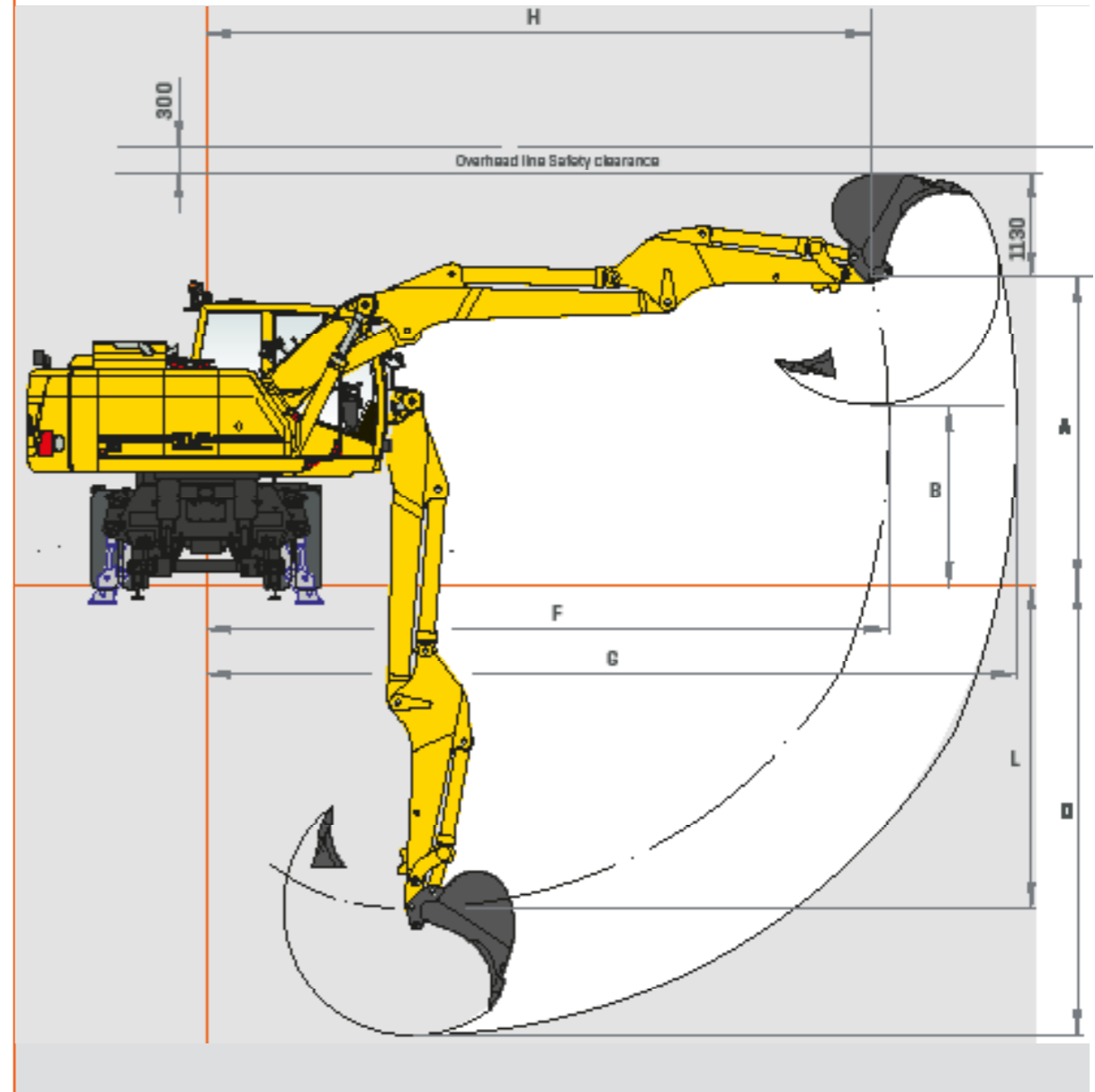


GRAB EQUIPMENT 235RR

Equipment: A68.5, C68.41P, C68.46, D67.22, F31, E332, E344

A	Height stick	4.100	mm
B	Dumping clearance	3.150	mm
D	Max. vertical digging depth	5.900	mm
F	Max. front swing radius	7.850	mm
G	Max. reach	8.700	mm
H	Max. boom position	6.900	mm
J	Max. reach height	-	mm
L	Bucket rotating point	3.950	mm
	Grab	450	l
	Grab clamp force	72.8	kN
	Operating weight	22.5	t

DIGGING EQUIPMENT 235RR



DIGGING EQUIPMENT 235RR

Equipment: A68.5, C68.41P, C68.46, D67.22, G649

A	Height stick	3.700	mm
B	Dumping clearance	2.250	mm
D	Max. vertical digging depth	4.850	mm
F	Max. front swing radius	7.850	mm
G	Max. reach	8.750	mm
H	Max. boom position	7.250	mm
J	Max. reach height	-	mm
L	Bucket rotating point	3.950	mm
	Bucket	800	l
	Tear-out force	112	kN
	Breakout force	141	kN
	Operating weight	22.5	t



1919

FOUNDATION

Hinrich Weyhausen founds the company and initially produces agricultural equipment at the Delmenhorst location.

1945

THE FIRST PATENT

The first patent for an ATLAS attachment crane is granted.

1950

FIRST FULLY HYDRAULIC EXCAVATOR

With the first fully hydraulically operated ATLAS excavator, the success story for an entire industry begins.

1956

ATLAS VECHTA

Start-up of the ATLAS factory at Vechta.

1960

ATLAS GANDERKESEE

Start-up of the ATLAS factory at Ganderkesee.

1965

RAIL-ROAD EXCAVATOR

The world's first ATLAS rail-road excavator lays the foundation for a leading position in this market.

1980

ATLAS UK

Start-up of the ATLAS Cranes production site at Bradford, England.



1986

ATLAS WHEELED EXCAVATOR 1304

Market launch of the best-selling ATLAS excavator model yet.

2001

CHANGE OF MANAGEMENT

ATLAS is taken over by the American Terex Corporation.

2010

ATLAS MASCHINEN GMBH

The entrepreneur Fil Filipov acquires ATLAS and re-establishes the company as an independent business under the name of "ATLAS Maschinen GmbH".

2012

SPARE PARTS GMBH

Foundation of ATLAS Spare Parts GmbH – in order to improve the efficiency of spare parts supply.

2014

NEW MANAGING DIRECTOR

ATLAS expands its product portfolio by tunnel excavators. At the same time, Brahim Stitou is appointed as managing director with sole power of representation of ATLAS Maschinen GmbH.

2015

INNOVATION 3

ATLAS delivers the first electric excavator with many more to follow.

The newly founded ATLAS Group Services GmbH now provides all training courses, which take place in the in-house training center.

The name of the company is changed from ATLAS Maschinen GmbH to ATLAS GmbH.

2017

MINI- AND MIDI-EXCAVATORS

ATLAS expands its product portfolio by mini- and midi-excavators.

2019

100-YEAR ANNIVERSARY

ATLAS proudly looks back on a 100-year history and duly celebrates the centennial.

2020

READY FOR THE FUTURE

ATLAS presents the first battery-powered excavator. The 200 MH accu is used in recycling for Stadtreinigung Hamburg.

Effective immediately, ATLAS machines are equipped with a stage V exhaust after-treatment system.

ATLAS manufactures driver's cabs in-house.

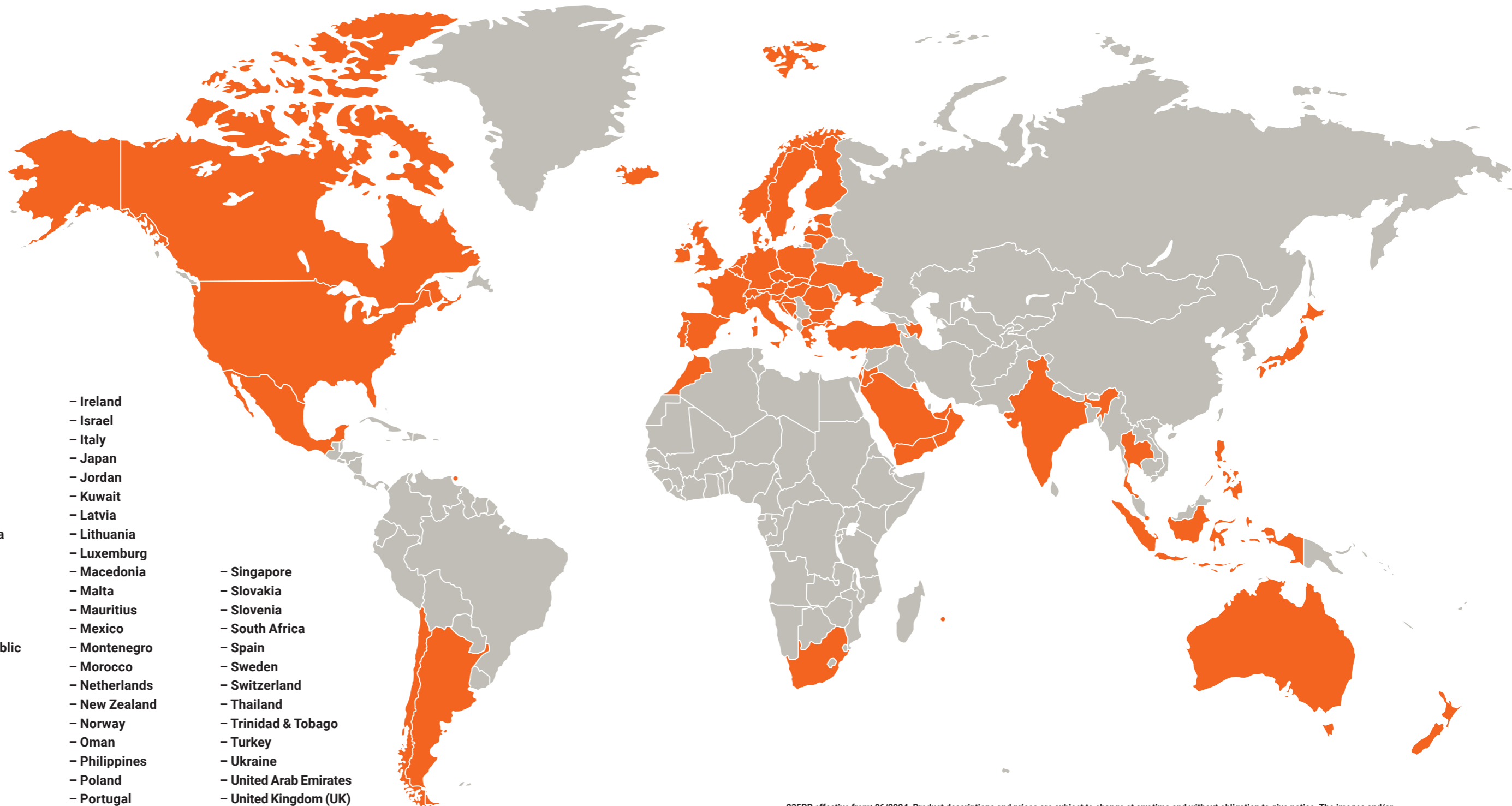
2023

A LOOK AHEAD INTO THE FUTURE

ATLAS modernizes its branding, revises the type designations ZW, MW, wheeled, cranes, and enhances its profile to be well prepared for the future.

**INNOVATIVE.
PASSIONATE.
PIONEERING.
SINCE 1919.**

OUR STRONG DEALER NETWORK.



- Argentina
- Australia
- Austria
- Azerbaijan
- Bahrain
- Belgium
- Bosnia and Herzegovina
- Bulgaria
- Canada
- Chile
- Croatia
- Cyprus
- Czech Republic
- Denmark
- Estonia
- Finland
- France
- Germany
- Greece
- Hungary
- Iceland
- India
- Indonesia
- Ireland
- Israel
- Italy
- Japan
- Jordan
- Kuwait
- Latvia
- Lithuania
- Luxemburg
- Macedonia
- Malta
- Mauritius
- Mexico
- Montenegro
- Morocco
- Netherlands
- New Zealand
- Norway
- Oman
- Philippines
- Poland
- Portugal
- Romania
- Saudi Arabia
- Singapore
- Slovakia
- Slovenia
- South Africa
- Spain
- Sweden
- Switzerland
- Thailand
- Trinidad & Tobago
- Turkey
- Ukraine
- United Arab Emirates
- United Kingdom (UK)
- USA
- Yemen

235RR effective from: 06/2024. Product descriptions and prices are subject to change at any time and without obligation to give notice. The images and/or drawings contained in this document are for illustrative purposes only and may differ from the standard version. For instructions for proper use, please refer to the corresponding operation manual. Failing to observe the operating manual when using our products or other negligent behavior may result in serious personal injury or death. The only warranty applicable to this product is the corresponding standard written warranty. ATLAS does not provide any warranty beyond this, neither explicitly nor implicitly. The designations of the listed products and services may be trademarks, service marks or trade names of ATLAS GmbH and / or their affiliates. All rights reserved. "ATLAS" is a registered trademark of Atlas GmbH.

Copyright © 2024 ATLAS GmbH.



GANDERKESEE FACTORY

Atlas GmbH
Atlasstrasse 6
27777 Ganderkesee, Germany
T: +49 (0) 4222 954 0
F: +49 (0) 4222 954 220
info@atlasgmbh.com
www.atlasgmbh.com

VECHTA FACTORY

Atlas GmbH
Theodor-Heuss-Str. 3
49377 Vechta, Germany
T: +49 (0) 4441 954 0
F: +49 (0) 4441 954 299
info@atlasgmbh.com
www.atlasgmbh.com

DELMENHORST FACTORY

Atlas GmbH
Stedinger Strasse 324
27751 Delmenhorst, Germany
T: +49 (0) 4221 491 0
F: +49 (0) 4221 491 443
info@atlasgmbh.com
www.atlasgmbh.com

ENGLAND LOCATION

Atlas Cranes UK Ltd.
National Sales & Service Facility
Wharfedale Road,
Euroway Trading Est.
Bradford, England BD4 6SL
United Kingdom
T: +44 (0) 1274900900
atlasuk@atlasgmbh.com
www.atlas-cranes.co.uk